

CREATING YOUR  
**DREAM**  
HOME





# CREATING A NEW OUTLOOK...

## Home *n.* The place where one lives

That's only the start of the dictionary definition of a home. We all know that home is more than that. It's a roof over our heads and our protection from the worst of the weather. It's a place to raise children or to relax when they've flown the nest. It's a place for work and hobbies, for entertaining and escaping. It's where we feel safe when we close the door on the world outside.

We all have different dreams and different views about what makes the perfect home. For some people it's a charming country cottage. Others might prefer a stylish apartment in a city block. It might be that it's the home you live in now – just needing a few changes to move it from okay to fabulous.

Universal Trade Frames can help you make the move to your dream home. Our windows, doors and conservatories are designed to create homes that are light, safe, energy-efficient, secure, weatherproof and easy to maintain. Beyond that, the choice is yours. We've got colours to suit your home's building materials, doors

that work for the way you live and a great choice of stylish windows ready to frame your perfect view. We can help you build a bigger home, a brighter home and a better home.

It's time to stop imagining a dream home. It's time you started living in one.





## “ CREATING MORE COMFORT

We're here to make you comfortable. You could be living in a well-insulated home where draughts and cold spots are a thing of the past. It could rain all year and you'd never have to worry about leaks or the front door sticking. Forget painting and ladders. Slow down – shut out the noise of the street and relax. ”





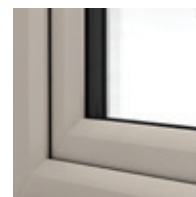
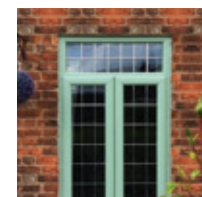
## ABOUT US

At Universal Trade Frames we believe in providing the highest quality manufactured PVC-U products available to the trade.

We are a family owned company trading since 1995 and renowned as a company who strives to stay ahead of the moving trends within our industry. You can always rely on us for top quality, innovative products and support.

### Made in Britain

Everything we manufacture is here in the UK and is therefore covered by regulations designed to protect the environment. We don't contribute unnecessarily to transport pollution or clogging up the shipping lanes. By keeping our manufacturing in the UK, we're proud to support British jobs and the people manufacturing our products enjoy fair wages and decent conditions.



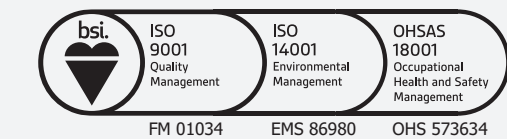
### If you need more copy you can use this:

- Our windows and doors provide an outstanding barrier against heat and noise loss - even in the most extreme weather conditions.
- Windows and doors made from PVC negates the use of timber, protecting the planet's trees.
- We recycle our own waste and generate new products whilst still retaining the highest standards in quality of material.
- Our windows and doors do not require painting and therefore don't consume additional harmful materials or generate associated waste.
- Our entire manufacturing process - from production to installation - is confined to the UK and Ireland thereby minimising transportation and fuel consumption from wider exportation.



## OUR ACCREDITATIONS

You wouldn't want to buy windows, doors or conservatories that weren't up to the job or deal with a business that didn't take its responsibilities seriously. We don't expect you to.





## PVC-U IS GREENER THAN YOU MIGHT THINK

PVC-U has had some bad press over the years but, if you're concerned for the planet, it's wise to look again and to consider the whole picture:

- PVC-U is insulating. Windows and doors made from this material keep homes warmer so less heating is required, cutting your fuel bills and carbon emissions. Our windows can achieve a Window Energy Rating (WER) of 'A+'. They can also achieve a U-value of  $0.8W/(m^2.K)$  – that's up to Passivhaus standards.
- PVC-U windows have a long life compared to timber and can be easily recycled.
- PVC-U needs very little maintenance. A wipe down with mild detergent does the trick. Compare that to using paints, wood preservatives and fungicides with high levels of volatile compounds that are toxic to aquatic life.





## HOW ENERGY-EFFICIENT ARE UNIVERSAL WINDOWS AND DOORS?

It depends on how the windows are constructed and on how they are glazed. Let's go through a few basics.

First of all, our windows and doors are made from an insulating material (PVC-U) which has been moulded into multi-chambered profiles. Air within the chambers forms an insulating barrier. Our frames are built with efficient seals to prevent draughts and where possible we use recycled composite material to reinforce the frames because of its excellent thermal properties.

A window is more than a frame – the glazing is critical too. Sealed units are carefully made using either two or three panes of glass, with an inert, insulating gas filling the cavity. Thermal spacer bars keep the panes of glass apart and edge sealants give another boost to the performance. Using special coated glass (known as

low-emissivity, or Low-E glass) allows the sun's warmth to be captured, contributing to passive solar gain and helps to retain that warmth in your home.

If it sounds complicated, we're sorry. But there is good news. Windows and doors are now covered by regulations which mean that their energy performance has to be declared. Under Building Regulations, new windows and doors have to be rated at Band 'C' or above. When you choose a new window, there's always a trade-off: because they include more expensive to produce glazing, 'A' rated windows will cost more than 'C' rated windows, but should result in greater savings on your energy bills.



The Energy Savings Trust provides independent figures to see how much you could save. Visit their website at [www.energysavingtrust.org.uk/domestic/content/energy-efficient-windows](http://www.energysavingtrust.org.uk/domestic/content/energy-efficient-windows).

Universal Trade Frames have been designed for energy-efficiency and can achieve a Window Energy Rating (WER) of 'A+'. They can also achieve a U-value of 0.8W/(m².K) which is up to Passivhaus standards. We're doing our bit to keep your energy bills under control and your home toasty warm!



## TRIPLE GLAZING

It sounds like an obvious choice: three panes of glass must be better than two, right? Unfortunately, it's not quite that simple. Whilst triple-glazed windows can provide exceptional levels of insulation (demonstrated by low U-values) good quality double-glazed windows can achieve the best Window Energy Ratings.

If your home is highly insulated throughout then a triple-glazed window may be the best choice and will avoid cold spots in your home. Similarly, if you have large expanses of glass, live in a very noisy place or are keen to reduce energy consumption to a minimum, then that third pane is a good option.

Our view is that it's unwise to pick triple-glazing without considering the facts. Triple-glazed windows are more expensive to make and, because they are heavier, more difficult and costly to install.

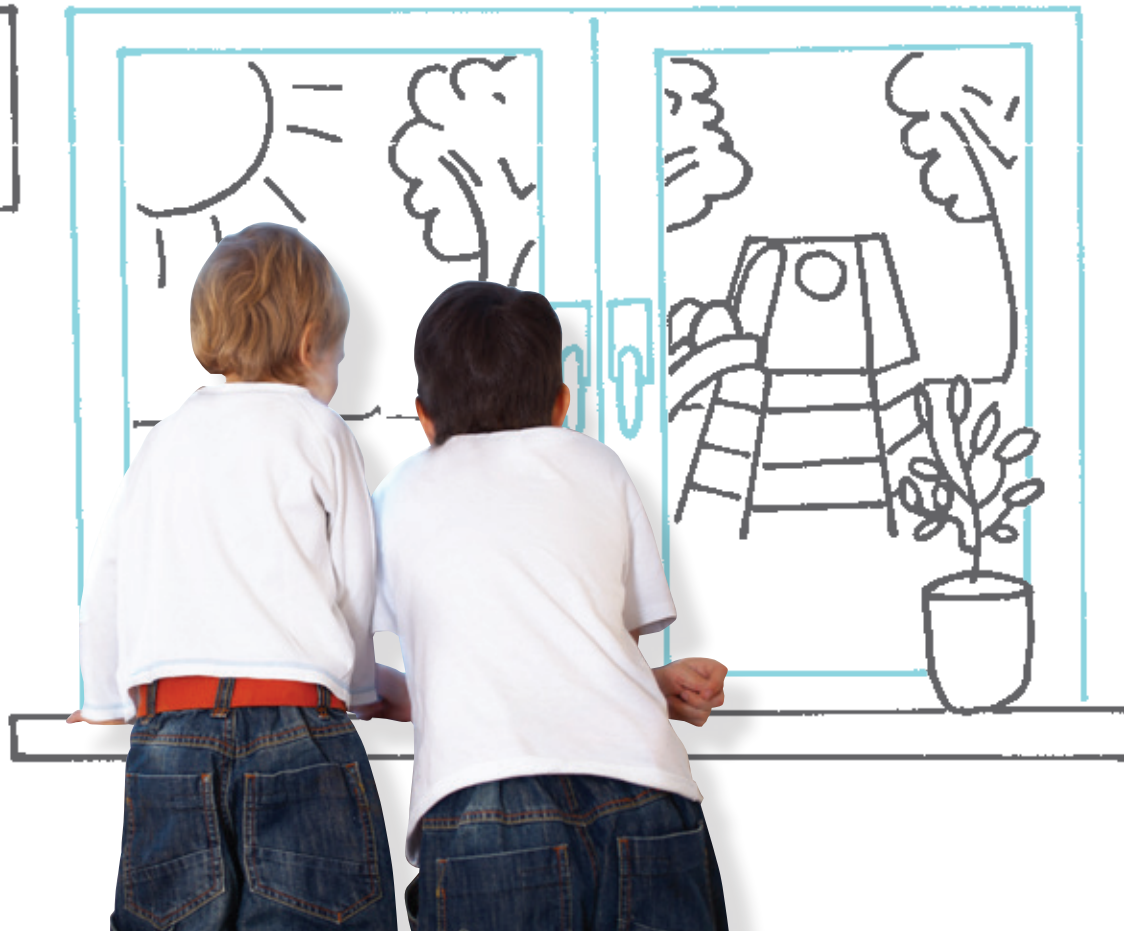
What's more, that third pane of glass can actually reduce passive solar gain. The savings from triple-glazing may be moderate compared to top quality double-glazing.

Your supplier will help you to make the right decision. If you do decide that triple-glazing is right for you, Universal Trade Frames have a range of extremely efficient triple-glazing solutions to create the perfect stylish and insulating windows to suit your home.



# CREATING YOUR PERFECT VIEW

People like looking through windows. It's a shame that they don't spend as much time looking at them, because when you chose Universal Trade Frames, the windows that frame your view are a brilliant balance of superb engineering, good looks, and thermal performance.



New windows need careful thinking. Do you keep the same styles as the frames you're replacing, or change to something that's more in-keeping with the age of your property? Do you want clear, uninterrupted lines and maximum glass, or the period detail of Georgian bars? Where's the best position for handles? Is double or triple glazing best for your home?

We don't expect that you know all the answers, and that's fine because we have a network of highly experienced fabricators and installers ready to help you make the right decisions.

Our profiles can be used to make all styles of windows, including casements, Tilt and Turns, Fully Reversible and Vertical sliders. All are available in the colour of your choice and with your selection of finishing touches, hardware and glazing, ensuring that your new windows are perfect for your home.







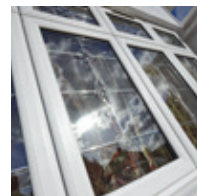
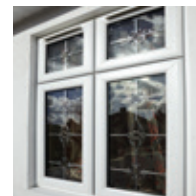
## CASEMENT WINDOWS

Casements are the most popular style of window in the UK.

They are characterised by outward opening vents which are combined with fixed panes (lights). Almost any size or layout is possible. Our casements are made using our Elite range of profiles, which have been engineered to give long lasting style and performance. Elite profiles are slim, but strong and insulating. When combined with high quality glazing, they create a thermally-efficient window which is robust and very easy to maintain. Permanently bonded, unobtrusive seals keep the rain on the outside – where it belongs – and secure multi-point locks keep your possessions safe.

Because properties and tastes differ, Our casements are available with either a classic bevelled or a modern ovolo shape. There's an extensive choice of glazing, including decorative glass, and a great selection of handles to complement the frames.

Windows are available in white, or in a range of beautiful wood-effect finishes and stunning colours. If you want, you can even choose different finishes for the inside and outside of your home.



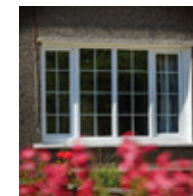
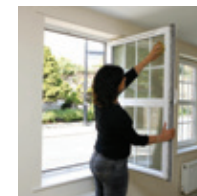
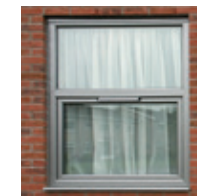
## TILT AND TURN WINDOWS

Tilt and turns combine simple, streamlined style with real practicality.

These windows are hinged at the base and tilt inwards for ventilation. With an extra turn of the handle, the frames can open fully into the room on a side hinge. That full opening means that tilt and turns can easily be cleaned from indoors – no need to struggle with ladders or to employ a window cleaner.

As well as the superb engineering, which provides secure all-round locking, Our tilt and turns windows are built to look good and to keep your home warm and weatherproof. And, if there are little ones at home, child-safety restrictors can also be fitted.

Tilt and turns are often used for hard to access properties or high-rise installation, but their sleek good looks will complement almost any home. There's a choice of finishes, including flat and textured coloured foils, wood effects and of course, the enduring classic, white.



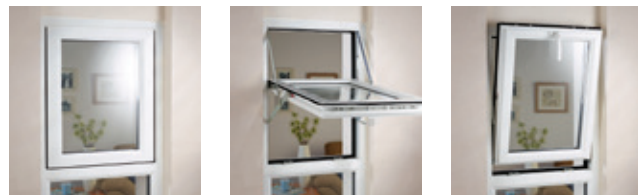


## FULLY REVERSIBLE WINDOWS

These smart looking windows are packed with great design features and deliver exceptional thermal performance.

Windows open outwards to either 100mm or 300mm but, when they need cleaning, they can be rotated, without entering the inside space, so there are no worries about snagging on curtains or blinds. Of course, your safety is paramount, so we fit safety catches and restrictors to protect you and your family at all times.

A range of glazing choices enables a Window Energy Rating up to 'A+', and these frames have the benefits of a recycled composite reinforcement that is not only insulating but is also kind to the planet. Like all our windows, Fully Reversibles are available in your choice of white, flat and textured coloured foils and supplied with top-quality secure and reliable hardware.



## VERTICAL SLIDERS

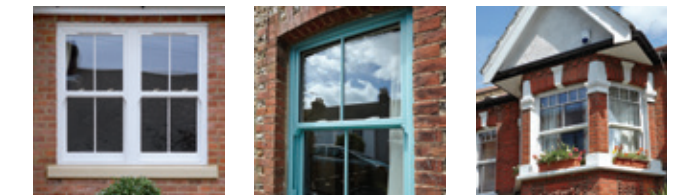
The answer to the traditional sliding sash window, the Vertical Slider has all the elegance and charm of a timber original, but none of the drawbacks.

Say goodbye to draughts and broken sash cords. Say hello to pile-sealed frames and easy-to-operate balance mechanisms.

Our Vertical Sliders windows are renowned in the industry for their faithful replication of timber sash styling and for their advanced features. They include sashes that tilt inwards for ease of cleaning, child-safety catches, secure locking mechanisms and effective weatherseals.

Even better, and great news when you're replacing timber sashes, these widows are designed to achieve a Window Energy Rating (WER) of 'A+'.

If you're trying to match existing glazing, you'll love the options available with the Universal Trade Frames Vertical Slider. These include Georgian bars, sash horns and deep bottom rails as well as a wide choice of colours, cills and hardware.







## BAY AND BOW WINDOWS

With a bay or bow window it's essential that the components are up to the job.

Universal Trade Frames are complete, with dedicated parts designed specifically for the creation of structurally sound and weatherproof, bay and bow windows. We've tested and proved that our frames, reinforcing and weatherseals are everything that you would expect.

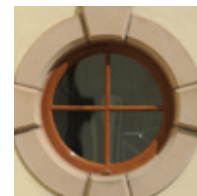
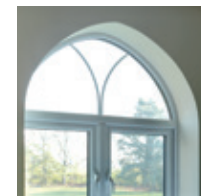
Using our superb range of Elite components, almost any style of bay or bow can be built and perfectly glazed to enhance and insulate your home and to protect it from the elements.



## SHAPED WINDOWS

Windows don't have to be rectangular.

If your home features an arched or circular aperture or something even more adventurous, then we believe that you should be able to glaze it to match the rest of your home. Too many interesting feature-windows or doorways have been bricked up or bodged over the years, and that's a real shame. Universal Trade Frames shaped windows are made to exact measurements so that they fit perfectly and can help to preserve the architect's original vision and your home's unique style. And with our fantastic systems they are every bit as secure, weatherproof and insulating as any shape of window.





# CREATING YOUR ENTRANCE

A new front entrance door says “welcome” like nothing else; a fabulous bi-folding door makes its own statement; a new French door can fill a dark room with extra daylight. It’s no exaggeration to say that a new door really does have the power to transform your home. They can create anything from instant kerb-appeal to a more relaxed lifestyle.



Our range includes residential doors, composite doors, French doors, inline sliding doors and bi-folding doors. Every single door has been engineered to be tough and durable, strong, secure and to provide outstanding levels of insulation and protection against the elements. We use profiles that match our window styles and offer a fantastic choice of colours and finishes to complement your building materials and your décor.

Our doors are made to order, to fit your home perfectly. If you need something special, to suit a larger doorway or an architectural feature, we’ll be happy to help. We’ve been making doors for over thirty years. All of our systems are proven and accredited and meet all relevant Building Regulations. And, for your peace of mind, all of our doors are designed for enhanced security.







## RESIDENTIAL DOORS

PVC-U panel doors are practical, very attractive and versatile enough to be used as front or rear entrance doors. Although they are lightweight, they are robust and very durable – ideal qualities for a busy entrance hallway or for a family home.

Panel doors are easy to maintain. No painting, no wood-preservatives, and no worries about them swelling or sticking in wet weather.

There is a vast choice: from fully glazed and half glazed up to solid panel styles and a selection of infill panels to suit every taste. Using the same Elite systems as our windows ensures a perfect match throughout your home. And, because our systems are designed for security and thermal performance, your home will be warmer and safer than ever before.



## COMPOSITE DOORS

Increasingly popular and rightly so, the composite door is a mix of modern materials and traditional timber door styling.

The doors are made using a rigid foam and timber core, around which is wrapped a tough, Glass Reinforced Plastic (GRP) skin, normally imprinted with a wood-grain texture. The colours go right through the GRP layer and won't fade or scratch. These doors will never need painting to keep their good looks. In addition to being very easy to maintain, composite doors have excellent thermal qualities and when combined with our frames and sealed-unit glazing offer exceptional levels of insulation. Security is provided by robust, multi-point locks and steel-reinforced frames.

Composite doors are available in many glazed and un-glazed styles including classic, traditional and contemporary designs. Combine with matching glazed side panels for wider openings and choose colour, handles, letterplates and knockers to create your bespoke and truly welcoming entrance.







## FRENCH DOORS

French doors have always been elegant and, having large glazed areas, are brilliant for bringing light into homes. Now, with modern materials, enhanced security and energy-efficient glazing they are better than ever.

Universal Trade Frames French doors use our Elite profiles to match perfectly with our windows. They are available in all of the same beautiful colours and with a choice of profile shape. Ideal for access to the garden, for porches, conservatories or for garden offices, French doors can be configured to open inwards or outwards. By adding fixed lights to the sides, it is possible to achieve a large expanse of glass to make the most of a stunning view.

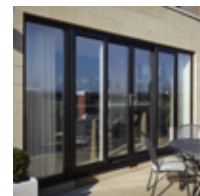
The highly impact-resistant PVC-U frames require practically no maintenance and are fitted with your choice of toughened safety glass and highly secure multi-point locks.

## INLINE SLIDING DOORS

Also known as patio doors, inline sliding doors are more popular than ever before. The simple, neat lines are great for today's homes and can open up any living space easily and without disturbing your furniture!

Choose from 2, 3 or 4 panes and a layout that suits your home and lifestyle. We use especially designed, trouble-free tracks and rollers to ensure effortless opening every single time, and a host of security features to ensure that when you want these doors to be closed, they'll stay that way.

- Perfect for patios, porches, conservatories, internal room dividers, outdoor offices
- Secured with multi-point locks, hook-latches and anti-jacking technology
- Midrail option
- Choice of colours, wood-grained finishes or classic white.





## BI-FOLDING DOORS

Simply stunning. Replace a wall with a bi-folding door and the transformation is amazing. Light floods in, the room appears bigger and entertaining is a breeze when the boundaries between indoors and outdoors are so flexible.

Universal Trade Frames bi-folding doors don't just look fantastic. They are fantastic. They are as secure and weatherproof as all of our doors and windows and with energy-efficient double or even triple-glazing they are practical and insulating as well.

Configure the doors how you want. Up to seven panes and with your choice of access door location. Panes can be folded internally or externally and there are optional low thresholds to ease access. Choose classic white or any of our attractive colours to complement your home's architecture, both indoors and out.







## CONSERVATORIES AND ORANGERIES

If you're growing out of your home, or if you just want more space to grow, then a conservatory or an orangery is a great way to achieve it. Build a refuge, a dining room, a playroom for the kids, a sanctuary for you or for your delicate plants.

Conservatories and orangeries come in all shapes and sizes. Distinctive and individual bespoke layouts can be created or choose the popular Victorian, Edwardian or gable ended layouts. Tailor the window and door styles to your taste and to enhance your home. Pick from our range of striking colours or natural-looking wood-grain finishes.

Modern conservatories don't need to be chilly in the winter and sweltering in the summer. Advances in roof materials and design, glazing and ventilation, mean that you can use your new room all the year round. And, because our profiles have Secured by Design approval and verified structural integrity you can be sure that your new space isn't just warm, and stylish, but it's secure and weatherproof too.





## “ CREATING MORE CHOICES

Everyone's different. For some people, plain and simple is the only way to go, for others detail and colour are vital. It doesn't matter where you are on the scale, our offering can be tailored to your tastes. We've got all the basics sorted, but the choices are up to you. After all, it's your dream home, not ours. ”



# COLOURS AND OPTIONS

Who says PVC-U has to be white? Who says you need timber for the detailed finishing touches?

Universal Trade Frames windows, doors and conservatories are available in a range of beautiful colours and finishes in addition to white. We use top quality durable foils that are bonded permanently to our profiles and which are guaranteed not to fade, peel or split. If you hate painting but love colour

or the patterns and textures of wood, then choose a low-maintenance way of expressing your spirit in your home. Simple, understated greys, vibrant primaries, striking modern black or the gentle harmony of green or cream.

## Relaxing Colours

Cream Base

Cream Cream

Sage Smooth

Claystone

Agate Grey

Pebble Grey

Chartwell Green

Windsor

## Natural Colours

Tan Base

Irish Oak

Honey Oak Super-Matt

Light Oak

Pyrite

## Expression Colours

Brown Base

AnTeak

Flemish Gold Smooth

Swamp Oak

Rosewood

Black Brown

## Statement Colours

White Base

White

Dark Red

Steel Blue

Dark Green

## Trending Colours

Grey Base

Black Ulti-Matt

Buckingham Grey

Anthracite Grey

Silver D Smooth

Basalt Grey Smooth

Anthracite Grey Smooth

Hazy Grey Finesse

Slate Grey Finesse

Kensington Grey

Slate Grey

### Profile base colour

We match your surface finish to the base colour to give you the best-looking window on the market. Colour design without compromise, design your window exactly how you want it!



### Options

Customise your windows with sash horns, arched heads or Georgian bars. Choose the handle shape and finish that matches your frames and enhances your décor. Add leaded, coloured, patterned or etched glass. Talk to your supplier about the possibilities and look at samples of windows and doors. If there is something you like, ask about it.







## SECURITY AND SAFETY

Universal Trade Frames take security and safety extremely seriously. Our products and the windows, doors and conservatories made from them are tested, proven and accredited.

### Structure

Under European Union directives, window and door products now have to carry CE marking. This is your assurance that the products comply with Building Regulations and are fit for purpose. CE marking documentation includes information about load-bearing capacities, weather-tightness and energy-performance.

### Hardware

We use top quality multi-point locks for security, anti-jacking technology on our sliding doors and egress hinges on all windows that could be used as escape routes.

### Profiles

Our profiles meet PAS 24 for enhanced security.

### Reinforcements

All of our windows and doors are reinforced where required for structural integrity using steel, aluminium or recycled composite materials.

### Glass

We use safety glass wherever it is required.

## YOUR INSTALLATION

When you're ready to create your dream home the next step is obvious. But we'll understand if you're a little nervous. We know that windows, doors and conservatories represent a fair investment of your hard-earned cash and understand that whatever type of home you live in, it's still your castle. We'd like to offer you our expertise, our pedigree and our accredited, trusted systems as reassurance.

We will be honest: there will be some disruption, especially if you're having new windows throughout or a new conservatory built. But, here's the good news – Universal Trade Frames windows and doors are widely recognised as being easy to install and to get right first time. And, of course, because of their long life-span it will be decades before you need to worry about it again. Choose an installer you like: someone who takes time to find out about your home and how you use it, who can show you samples and explain all the features to you. Ask lots of questions and ask for testimonials. In all cases make sure that your supplier is FENSA or CERTASS registered and that you are offered an insurance backed guarantee. We would be delighted to recommend a business, local to you, to supply and fit exactly what you want.





CREATING  
**MORE**  
WITH UNIVERSAL



Yeomanry Road, Shrewsbury

Shropshire SY1 3EH

**Tel: 01743 442244 / 01743 442255**

Email: [info@utfl.co.uk](mailto:info@utfl.co.uk)

[www.utfl.co.uk](http://www.utfl.co.uk)

UNIVERSAL TRADE FRAMES is PVC-U profile system supplied to local independent manufacturers and installers who contract to install windows, doors and conservatories. UNIVERSAL TRADE FRAMES cannot be held accountable for manufacture or installation by independent companies. All information in this publication is provided for guidance only and is given in good faith. As it is company policy to continually improve products, methods and materials, changes of specification may be made from time to time without prior notice. This statement does not affect your statutory rights. © UNIVERSAL TRADE FRAMES Ref: SP?????