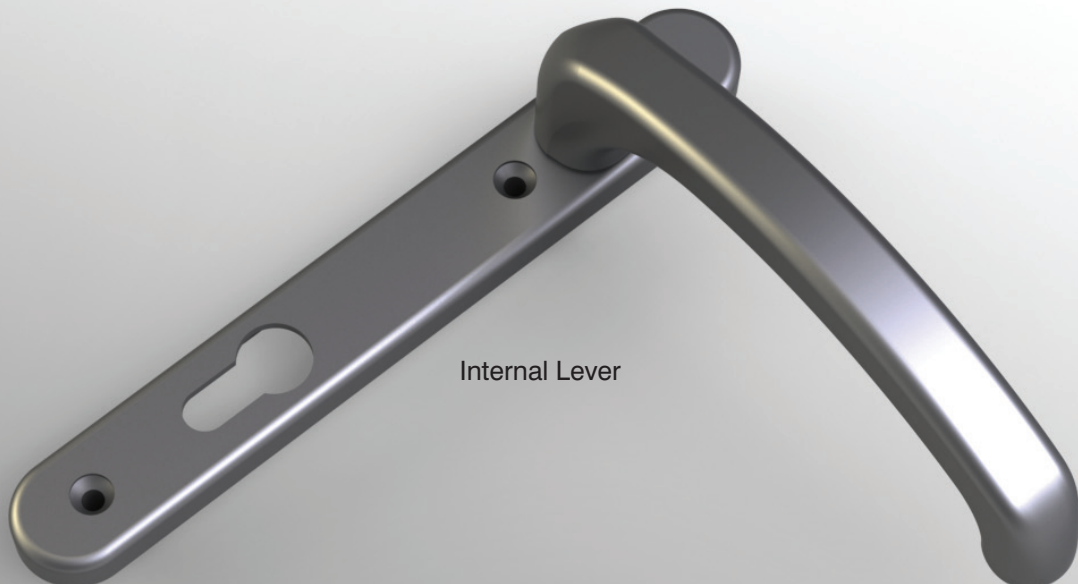


Windsor Inline DDA Lever

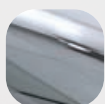


Features & Benefits

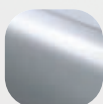
- Die cast zinc construction with heavy duty spring cassette
Sturdy feel and consistent 90 degree lever return
- Compact baseplate with screws in close proximity
Combats lever attack
- Sculpted extended ergonomic lever and low friction nylon bush
Easy to grip, smooth action and low operating forces required to operate handle
- Supplied with screw and spindle pack to suit 60-70mm profiles
Everything needed for installation included
- Colour coordinated screw heads
Perfectly matching hardware, even down to the smallest details
- Ample lever-to-door surface clearance and available in a wide range of contrasting colours
Compliant with Document M of the The Disability Discrimination Act (DDA)



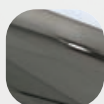
White



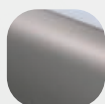
Hardex Chrome



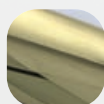
Hardex Satin



Hardex Bronze



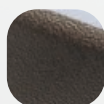
Hardex Smoke



Hardex Gold

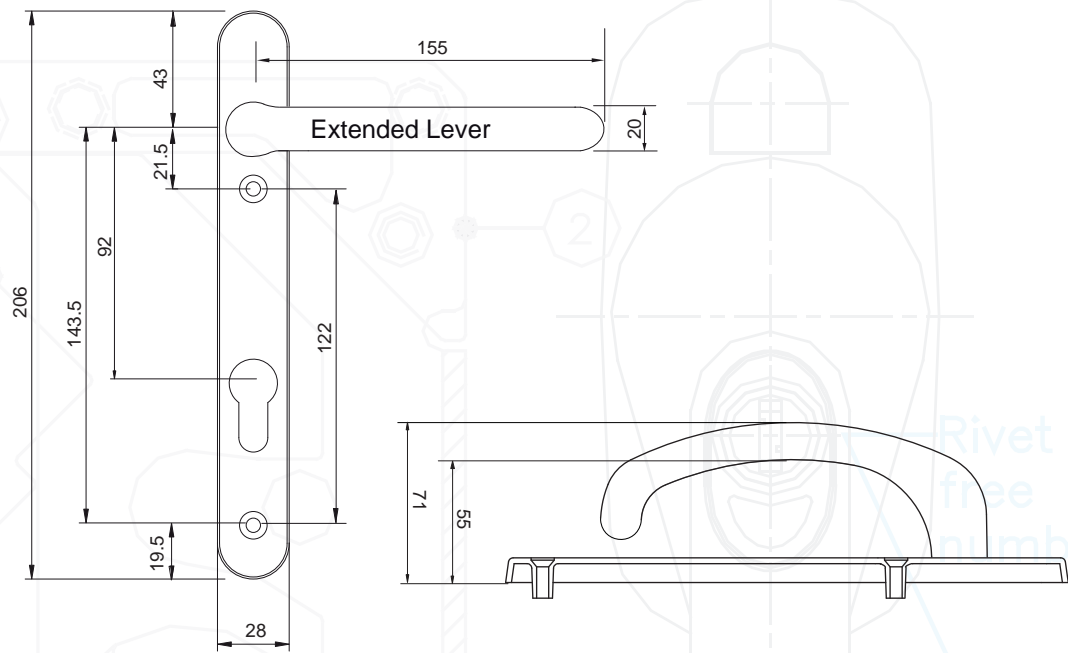


Antique Black



Antique Copper

Windsor Inline DDA Lever Lever



All dimensions are shown in millimetres

Additional Benefits

- **Baseplate in common with all Windsor handles**
Same routing detail regardless of chosen variant
- **Supplied fully assembled**
Simple and quick installation, no need to fit springs or lever
- **Wide backplate**
To suit cylinder guards and accommodate larger cylinder preparation
- **Supplied with care instructions**
Helps the homeowner to keep the hardware in optimal condition
- **Silicon Site-Protectors available**
Ensures perfect condition after installation
- **Each part packaged in a separate chamber, supplied as a set**
No scratching of parts during transit
- **Secured by Design**
Additional peace of mind

Technical Specification

Designed for PVC-U and Composite doors

All finishes salt spray tested to 480 hours (BS EN 1670: Class 5)

Tested to 200,000 cycles

Tested as part of a complete door set that successfully achieved PAS24

92mm PZ

Includes screw and spindle pack suitable for 60mm - 70mm profiles (1 x 8mm x 120mm spindle, 2 x M5 x 70mm colour coordinated machine screws, 2 x M5 x 80mm colour coordinated machine screws)

Product Codes

Windsor Inline DDA Lever Lever

| White | Hardex Chrome | Hardex Satin | Hardex Bronze | Hardex Smoke | Hardex Gold | Antique Black | Antique Copper |
|-------|---------------|--------------|---------------|--------------|-------------|---------------|----------------|
| 1F300 | 1F301 | 1F302 | 1F303 | 1F304 | 1F305 | 1F306 | 1F307 |